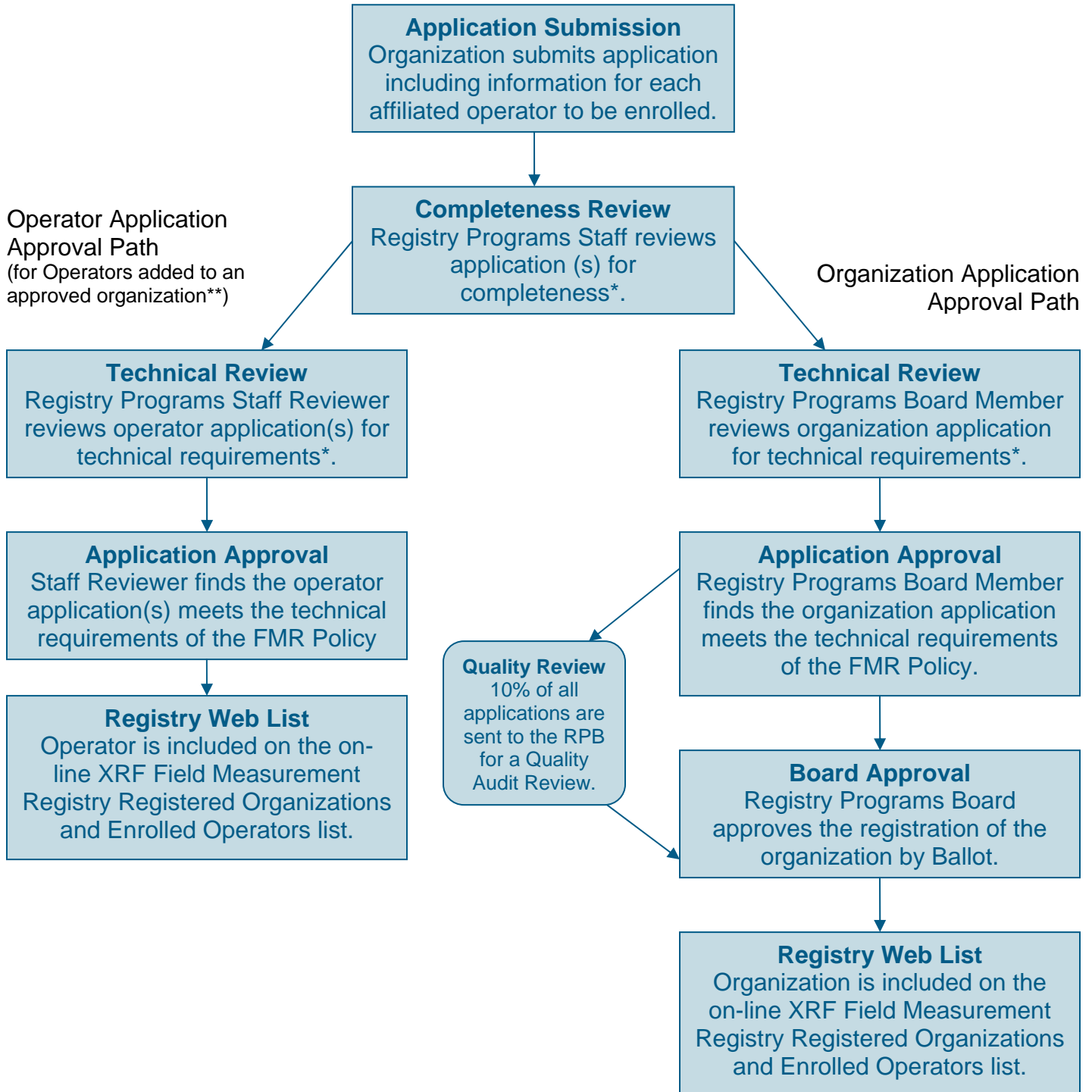


# XRF Field Measurement Registry

## Overview of the FMR Registration Process



\*If deficiencies are found, the organization must submit additional information within a required time frame.

\*\*For initial organization applications, operator applications are reviewed and approved during the organization registration process.

For more information, see the XRF FMR Policy: <http://www.aiharegistries.org/documents-policies-fees>.